



Backwell School Weekly Bulletin



Friday, 01 May 2026

Dear Parents, Carers, Families and Friends,

This week reminded us that learning doesn't stop when things don't go quite to plan. Following Tuesday's unexpected power cut, our students responded in an exemplary way — calmly, maturely and with a determination to simply get on with their learning. Classrooms quickly adapted, conversations remained focused, and the sense of purpose was unmistakable. It was a powerful demonstration of our school value of *ambition*: ambition not just to achieve, but to persevere, adapt and make the most of every opportunity. We are incredibly proud of how our students rose to the challenge and showed exactly what being ambitious in learning truly looks like.

We have also seen a continued excellent start to the use of mobile phone pouches. Staff have reported noticeably fewer toilet visits during lessons and a clear increase in student focus and engagement, helping learning time to be used to its fullest. I do hope that you are having conversations at home on the responsible use of mobile phones, and maybe students are starting to reflect that they actually *like* not having to worry about their phone being a daily distraction, allowing them to concentrate fully on their work and their interactions with others. As part of this conversation can I ask that you check that your child has named their pouch so it can be identified. With further government expectations emerging around schools being truly mobile phone free, it has been particularly positive this week to share our experience at Backwell with two other schools who are keen to implement a similar approach in the near future.

Last weekend's Year 9 Duke of Edinburgh practice expedition in the Mendips was a fantastic example of students grasping opportunities and challenging themselves beyond the classroom. Throughout the weekend, students showed real teamwork and resilience as they navigated routes, managed their equipment and supported one another through the demands of the expedition. The experience highlighted the tremendous value the DofE programme brings, helping students to grow in confidence, independence and

perseverance. It was especially pleasing to see our school values in action: kindness in the way teams worked together and looked out for one another, ambition in pushing themselves to meet the challenge, and curiosity as they explored new landscapes and learned new skills. Well done to all involved for embracing the opportunity with such positivity and determination. With further expeditions taking place for students working towards their Bronze, Silver and Gold awards, I look forward to feeding back on how they get on and am incredibly grateful to the staff that give up their time to accompany the students on these trips.



Public examinations for our Year 11 and Year 13 students begin this week, marking the culmination of almost two years of sustained hard work, commitment and perseverance. Along the way there have inevitably been ups and downs, and students should be proud of how far they have come. As the examination period gets underway, we will continue to support students in every way possible, and if there is anything further we can do to help, please do not hesitate to get in touch. I would also like to thank parents and carers for the invaluable support you provide at home, particularly with revision and encouragement. We now look forward to guiding students through the coming weeks before celebrating their great successes later in the summer.

We wish our students the very best of luck following the Regional Languages Spelling Bee Final in Bath, which took place earlier this week, and we now eagerly await the results.

Reaching this stage is a fantastic achievement and reflects the commitment, confidence and determination required to compete at regional level. The Languages Spelling Bee is a powerful way of bringing languages to life, encouraging students to be *curious* about words, patterns and meanings, and to develop a deeper interest in how languages work. We are incredibly proud of how our students have represented the school, embracing the challenge with enthusiasm and showcasing our value of curiosity in action.

A reminder to parents and carers that ongoing roadworks on the A370 are currently causing significant delays, particularly during the morning commute. We kindly ask that families plan ahead where possible to help ensure students arrive at school on time. This is especially important for our Year 11 and Year 13 students during the examination period, as punctual arrival is essential for morning exams. Thank you, as always, for your understanding and support in helping the school day start calmly and on time for all students.

Thank you, as always, for your continued support. By working together, we ensure that 'we are Backwell'.

Wishing you a lovely long weekend — let's hope the sun shines!



Will Penny
Headteacher



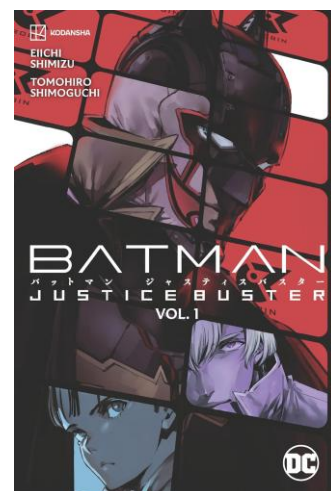
Year 8 Paper Masks

Book of the Week

Batman Justice Buster Vol.1 By Eiichi Shimizu

Crime in Gotham has gotten so out of control that Batman must step up his arsenal of fabulous toys.

Gotham City has been under the protection of Batman for only a short amount of time, but since the vigilante's appearance, crime has changed. It's gotten more bold, more destructive. As Batman tries to rise to meet these new threats, he develops a computer system, ROBIN, to help him analyse and subdue the rising criminal tide and hopefully one day put an end to crime in Gotham.



From Japanese writer Eiichi Shimizu most known for their work on Ultraman.

Comic-Con

From the 5th-8th May, Backwell School Library will be hosting its first ever Comic-Con. We will be promoting our newly updated collection of comics, manga and graphic novels whilst also celebrating all things related to comics, sci-fi and fantasy.



During the week there will be daily film screenings, a retro-arcade, board games (including exclusive access to the new Backwell School board game) and every student who takes out 2 books from the library will receive 3 Free Pokemon cards.

More activities and information will be announced in the up-coming days.



Summer 2026 Exam Timetables

Students entered for examinations this summer were issued with their **final exam timetable on 21 April** via their **school email account**.

A copy of this email was also sent on the same day to **parents/carers**, using the email address registered with the school.

Exam timetables can also be accessed via the [Student/Parent Exam Portal](#).

If you have any queries or require further assistance, please contact the Exams Office at

✉ exams@backwellschool.net

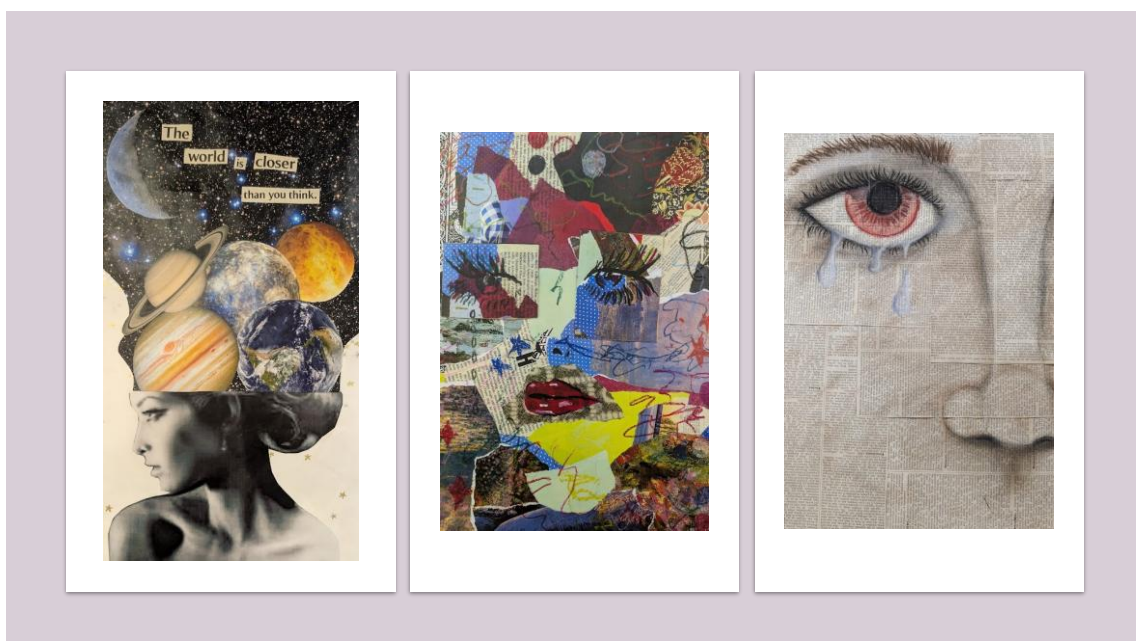
To all parents/carers of Year 11 & 13 Leavers students:

Please check your ParentPay accounts. If there are any outstanding debts/payments, they must be cleared and paid. Failure to do so, will prevent your child from receiving a Leavers' Ball ticket. If you have a credit balance remaining on your ParentPay dinner money account, please complete the following: [Dinner Money Refund or Transfer Request Form Summer 2026 – Fill in form](#) to organise a refund or transfer to a sibling's dinner money account. Any queries or issues, please contact the Finance team via their email:

finance@backwellschool.net

Library Returns

With the last days for Year 11 and Year 13 students fast approaching, we ask that any resources that students have borrowed from the library be returned by Friday 22nd May. Failing to do so will result in a fine placed upon your child's ParentPay account, which will prevent your child from purchasing a ball ticket until it has been settled.



School Clubs

Performing Arts and Generic Clubs schedules for Term 5 can be found on the website. The PE Department will update their After-School Sports Club schedule as soon as possible, please bear with us whilst staff get exam moderations and fixtures out the way.

Term 5 - Personal Development

In Personal Development at Backwell School, we work together to nurture the whole child, preparing them to be responsible, respectful, active citizens for life in modern Britain, focusing on character, resilience, wellbeing, and developing readiness for the next steps in education, training, or work. Students complete some of this work in specialised timetabled sessions and in tutor time. To help guide parents in their conversations with their children on these topics we are now including an outline of the areas that your child has been talking about at school in the Newsletter. Please do contact us via the school email - mailbox@backwellschool.net - if you would like to discuss any aspect of our Personal Development Curriculum in more detail.

We will also be launching a consultation on the changes we will be making to the Relationships, Sex and Health Education (RSHE) curriculum from September 2026 to ensure that this aligns with both the updated statutory government guidance and our school values. Please see the [letter](#) on ways in which you can contribute your views.

What is happening in Term 5

Year 7 are looking at Health and Wellbeing including the importance of exercise for physical and mental health as well as the importance of a healthy diet and the impact of healthy choices on mental wellbeing.

Year 9 are also looking at Health and Wellbeing including revisiting what constitutes a healthy lifestyle and a healthy weight and exploring the links between an inactive lifestyle and ill health. **Year 10** will be discussing issues around the benefits of diversity within our society during their SMSC lessons. In tutor time they will be talking about Health and Wellbeing including the physical and psychological consequences of addiction, the health risks associated with tobacco and the dangers of prescribed drugs.

Year 8 are talking about Internet Safety and harms including the similarities and differences between online and physical world, the risks of over-reliance on online relationships and how to identify harmful behaviours online and where to access support if you are the victim of this.

Sixth form

During Year 12 tutor times students are looking at Relationships, including Consent, Trust and Intimacy and Ending Relationships.

Quick Links

- [School Uniform and Equipment Guidance](#)
- [Financial Support](#)
- [Sixth Form Bulletin](#)
- [Backwell School Careers Bulletin - May 2026](#)

Letters Home

- [Year 10 Education Behind Bars – History and Philosophy and Religion trip to Shepton Mallet Prison](#)
- [Year 11 GCSE English Literature Lectures](#)
- [Year 13 - The Examination Period and Study Leave](#)
- [Year 12 A-level Geography Fieldwork Days - June 2026](#)
- [Year 11 GCSE Exams Information](#)
- [Year 11 Celebration Ball – Monday 29 June 2026](#)

Dates for your Diary

Monday 04 May	Early May Bank Holiday – School Closed
Wednesday 13 May	French Exchange Parents' Information Evening – (17:30)
Thursday 14 May	Year 13 Leavers Day
Friday 22 May	Year 11 Leavers Day Term 5 Ends
Monday 01 June	Start of Term 6

Reminder of ongoing road closures and highways work in Backwell – Information from North Somerset Highways

As part of North Somerset Council's commitment to improving the district's roads, we will soon be completing highway maintenance works to A370 West Town Road, Backwell (junction with Rushmoor Grove) to Farleigh Road (junction with Fairfield Way)

The highway maintenance works are scheduled to begin on Tuesday, 07 April 2026, concluding on Friday, 24 July 2026.

We will be completing various highway maintenance and improvement works, commencing on the Tuesday, 07 April 2026. The works will be completed in phases as we move along the network between West Town Road, Backwell (junction with Rushmoor Grove) to Farleigh Road (junction with Fairfield Way).

Following the closure of the A370 in Backwell earlier in April, highways work will continue on the A370 through the village, working under 24 hr temporary traffic signals between Monday, 20 April – Friday, 10 July 2026.

Please note, these temporary traffic signals will be in different locations within the work extents during these dates.

There will be a Full Road Closure Monday, 13 July – Friday, 24 July 2026 between 8pm – 6am.

There will be no through access during this time, please follow the signed diversion. All closure and diversion information can be found here: <https://one.network>.

Pedestrian access to properties will be maintained at all times. There will be traffic marshals on site who will be able to advise you of access arrangements as they arise, please note, there may be a delay whilst the site is made safe for access/egress and our marshals may recommend accessing from the other end of the closure.

Thank you.

North Somerset Council





NEW Venue near you! Join the Holiday Fun at Backwell this May Half Term. Book by Sunday 17th May to receive 20% off using the code: Early Booker.

We have loved seeing so many children come along to Shine Holiday Clubs and look forward to welcoming more of you.

Please note our **NEW venue – Backwell School** with bigger facilities and more activity offerings.

For children at any school from **Reception – Year 6**, days run from 09:00-15:30 with (early and late hours) available if you need them.

There are loads of different activities such as, Mega Mash Up, Creative, The Greatest Showman Dance Gymnastics with Cheer, Football and Cricket there really is a day your child will love.

Shine are Ofsted Registered so you can pay via Childcare Vouchers and the Tax-Free Childcare Scheme.

Click here [Shine Holiday Clubs | Sports and creative activities](#) to see what's on and use the code **Early Booker to get 20% off.**



MAY MADE EASY
WITH SHINE HOLIDAY CLUBS
MyShine.co.uk

BOOK NOW FOR
20% OFF

Use Code:
Early Booker

Offer ends
17/05/2026
*Conditions apply



MENTAL HEALTH AWARENESS COMPETITION!



North Somerset
Youth Parliament



Scan here for the rules, deadlines, and how to enter!

We want to raise awareness about mental health to increase the quality and quantity of support available!



...but we need your help!

Do you want to enter a competition to win a £100 voucher?



All you need to do is create a short video, that is no more than two minutes long!



Chef Manager Backwell School

- Lead a brand-new state-of-the-art kitchen with 650-seat dining hub opening Sept 2026
- 40 hours per week, Mon-Fri, 38.8 weeks, Term Time Only – no weekends!
- A competitive £30,436 per annum
- Full operational and creative leadership
- Join the Aspens family and grow your career with no ceiling

If you think this position is for you, please contact Katie Hamblin with your CV:

katie.hamblin@aspens-services.co.uk

Chef Manager Backwell School



Join Aspens Catering at Backwell School at a truly exciting time as we transform our catering facilities for September 2026 to create an outstanding and inspirational dining experience for every student. As part of the Backwell staff team, you will join a supportive and collaborative community where colleagues work closely together to achieve the very best for our students. We are united by our core values of being Kind, Curious and Ambitious, and these principles shape everything we do.



A brand-new state-of-the-art kitchen is being built alongside a fully expanded and refurbished dining room with seating for approximately 450 pupils, complemented by a new external canopy area providing seated space for a further 200 students. An innovative outdoor serving container will offer fast, fresh "Grab and Go" options at social time, bringing greater choice and convenience to students throughout the day. With changes to the school day ensuring all students benefit from one vibrant, modern dining hub instead of the current split-site operation, this is a unique opportunity to be part of a forward-thinking school investing in the future of food service.